

Product Selection Guide

Dino-Lite Digital Microscope

Resolution	Interface	Features							Part No.	Magnification (Working Distance)											
		FLC	eFLC*	AMR	EDOF / EDR*	DPQ*	AMI	APL		Optional WiFi Streamer	Detachable Cable	10x ~ 200x (WD=29.9 - 11.2 mm)	30x ~ 200x (WD=60.2 - 11.9 mm)	10x ~ 140x (WD=234.5 - 30.5 mm)	10x ~ 50x (WD=182 - 14 mm)	10x ~ 70x (WD=593 - 108 mm)	400x ~ 470x (WD=518 - 9.5 mm)	415x ~ 470x (WD=611 - 1.8 mm)	500x ~ 550x (WD=918 - 9.2 mm)	700x ~ 900x (WD=6.4 - 5.9 mm)	45x ~ 70x (WD=146 - 108 mm)
Dino-Lite Edge^{HS}																					
8 MP	USB 2.0	•	•	•	•	•		•	AM8917M	ZT	ZTL	ZT4							T8		
8 MP	USB 2.0	•	•					•	AM8517M	ZT	ZTL		T4A						T8A		
8 MP	USB 2.0	•						•	AM8117M	ZT	ZTL										
1.3 MP	USB 2.0	•	•	•	•			•	AM4917M	ZT	ZTL	ZT4							T8		
1.3 MP	USB 2.0	•	•			•	•	•	AM4517M	ZT	ZTL								T8A	TFP	
1.3 MP	USB 2.0	•						•	AM4117M	ZT	ZTL	ZTW									
Dino-Lite Edge 3.0																					
5 MP	USB 3.0	•	•	•	•			•	AM73915M	ZT	ZTL	ZT4							T8		
5 MP	USB 3.0	•	•			•		•	AM73515M	ZT	ZTL								T8A		
5 MP	USB 3.0	•						•	AM73115M	ZT	ZTL	TF									
Dino-Lite Edge																					
5 MP	USB 2.0	•	•	•	•		WF-20	•	AF7915M	ZT	ZTL	ZT4							T8		
5 MP	USB 2.0	•	•		•	•	WF-20	•	AF7515M	ZT	ZTL		T4A					T8A	TFP	T1A ZT1P	T2A ZT2P
5 MP	USB 2.0	•					WF-20	•	AF7115M	ZT	ZTL	ZTW	TF								
1.3 MP	USB 2.0	•	•	•			WF-20		AF4915	ZT	ZTL										
1.3 MP	USB 2.0	•	•				WF-20		AF4515	ZT	ZTL	ZT4		T5							
1.3 MP	USB 2.0	•					WF-20		AF4115	ZT	ZTL	ZTW	TF/ZTF								
5 MP	USB 2.0	•	•	•			WF-10		AM7915M	ZT	ZTL										
5 MP	USB 2.0	•	•		•	•	WF-10		AM7515M	ZT	ZTL		T4A					T8A	TFP	T1A ZT1P	T2A ZT2P
5 MP	USB 2.0	•					WF-10		AM7115M	ZT	ZTL	ZTW	TF								
1.3 MP	USB 2.0		•				WF-10		AM4515	T/ZT	TL/ZTL	ZT4		T5				T8			
1.3 MP	USB 2.0						WF-10		AM4115	T/ZT	TL/ZTL	TW/ZTW	TF/ZTF								
960H	TV								AM5212	T/ZT	TL/ZTL										
720p	D-Sub								AM5216	ZT	ZTL	TF/ZTF									
HD 720p	HDMI								AM5218	ZT	ZTL	ZTW	ZTF								
										20x ~ 50x, 220x (WD=48.7 - 0 mm)	20x ~ 90x (WD=151 - 46.6 mm)	430x ~ 470x (WD=3.15 mm)	500x (WD=0.1 mm)								

Dino-Lite Premier																					
1.3 MP	USB 2.0						WF-10		AM4113	T/ZT	TL/ZTL	ZT4	T5								
0.3 MP	USB 2.0						WF-20		AF3113	T											
0.3 MP	USB 2.0						WF-10		AM3113	T											

Dino-Lite Basic																					
0.3 MP	USB 2.0						WF-10		AM2111	•											

* The feature is limited to use in DinoCapture.

Special Lighting Options

	UV		Infrared			Switchable			
	375 nm	395 nm	780 nm	850 nm	940 nm	375 nm + white	395 nm + white	375 nm + 940 nm	395 nm + 940 nm
AM8117M	FU	FV	FK	FI	EJ	FUW	FVW	JU	JV
AM4117M	FU	FV	FK	FI	EJ	FUW	FVW	JU	JV
AF4515	FU	FV	FK	FI	EJ	FUW	FVW	JU	JV

Fluorescence Options

	ex.	400 nm	435 nm	465 nm	465 nm + 580 nm	465 nm	520 nm	575 nm	620 nm
		em.	420 ~ 650 nm	475 ~ 650 nm	510 ~ 545 nm	505 ~ 535 nm + 610 ~ 650 nm	510 ~ 620 nm	570 ~ 650 nm	615 ~ 650 nm
AM8117M		CPFW	BFCW	G2FBW	GRFBY	GFBW	YFGW	RFYW	DFRW
AM4117M		CPFW	BFCW	G2FBW	GRFBY	GFBW	YFGW	RFYW	DFRW

Product to be available.

Dino-Eye Eyepiece Camera

Product	Resolution	Interface	Eyepiece Port
AM7025X	5 MP	USB 2.0	23 mm / 30 mm / 30.5 mm / C-Mount
AM4025X	1.3 MP	USB 2.0	23 mm / 30 mm / 30.5 mm / C-Mount

Product information may be subject to change.

www.dino-lite.com

Dino-Lite

Handheld Digital Microscope | Eyepiece Camera | Accessories

ANMO ELECTRONICS CORP.

TAIPEI OFFICE

17F-1, No. 97, Sec. 4, Chongxin Road, Sanchong Dist., New Taipei City 241513, Taiwan
Tel: +886-2-2974-9126 / Fax: +886-2-2974-9125

HSINCHU OFFICE

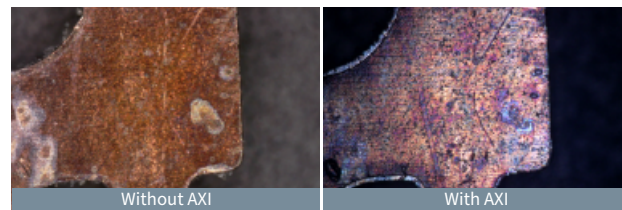
5F-1, No. 76, Sec. 2, Dongda Road, Hsinchu City 300082, Taiwan
Tel: +886-3-535-7868 / Fax: +886-3-535-8098

Redefine the microscope

The Dino-Lite Glossary

AXI - Axial Illumination

The AXI feature uses through-lens illumination to provide switchable coaxial lighting for examining reflective surfaces. It can be used to highlight or increase the contrast of patterns, defects, or surface features on a variety of materials, such as semiconductors, glass, and metal.



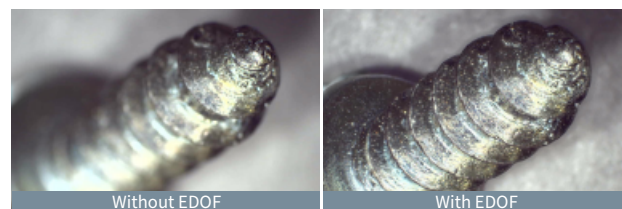
IC lead frame viewed at 210x magnification.

AMR - Automatic Magnification Reading

AMR is a feature that detects the current magnification of a Dino-Lite in use. The tracked magnification eliminates human error when reading and entering the magnification value, improving the efficiency and accuracy of measurements.

EDOF - Extended Depth of Field

EDOF creates images with a wider depth of field by stacking multiple images at different focal depths with one click. This results in a clear view of objects with topography changes in height.



Screw captured at 35x magnification.

FLC - Flexible LED Control

Shadows can be useful in microscopy when they are used to reveal surface features such as depth and height variations in a sample. FLC provides on/off switching capability of each quadrant and 6-level intensity adjustability of activated quadrants, enabling the creation of shadows by uneven lighting. It can be useful for highlighting surface features and topographical variations or enhancing contrast without using auxiliary side lighting.



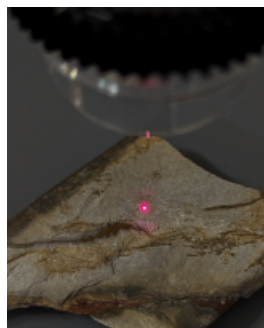
Metamorphic rock viewed at 60x magnification.

Polarizer

Polarizing Dino-Lite microscopes have two linear polarizers: one in front of the LEDs that can rotate and another in the optical pathway to the sensor. On its own, it can be used as reflective polarizing light microscopy to suppress glare for better contrast or perform subsurface examinations. Used with a polarizer backlight, such as the BL-ZW2, it can be used as transmitted polarizing microscopy for thin film or petrography examinations.

APL - Aim Point Laser

APL is a through-lens laser that casts a red dot visible on the sample and live image. This helps to position a point of interest under the microscope's field of view. The Dino-Lite equipped with APL is classified as a Class 1 laser product that is non-hazardous for normal use.



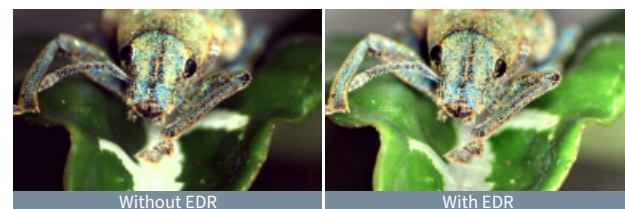
APL projecting on metamorphic rock.

DPQ - Depth Acquisition

DPQ is a feature that leverages the microscope's small depth of field to extract depth or height by comparing the focus of a position with a reference. It provides an indirect yet effective way of obtaining depth information from surfaces that exhibit topographical variations.

EDR - Extended Dynamic Range

EDR is a feature that creates images with a wider dynamic range by stacking multiple images at different exposure levels with one click. This allows details to be more visible in areas that may have been too bright or too dark in a single exposure.



Phyllobius calcaratus captured at 30x magnification.

eFLC - enhanced Flexible LED Control

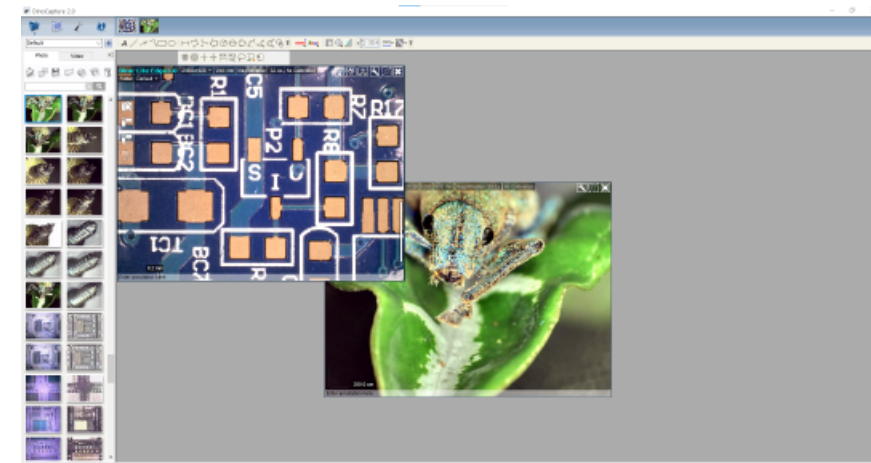
The eFLC added 32 levels of intensity adjustability to both the bright and dark quadrants of FLC. This allows to fill light in the shadows to avoid clipping and achieve better detail in photos.

Software

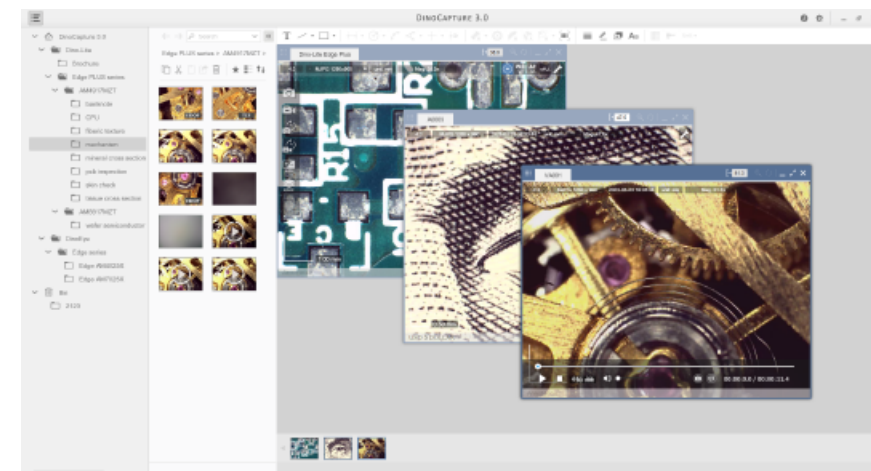
Dino-Lite and Dino-Eye devices require software for controlling various functions, including illumination and camera settings. Softwares are available with Windows or MacOS. Additionally, there are dedicated apps for Android and iOS mobile devices, which allow users to stream images through a Wi-Fi steamer for convenient on-the-go usage.

DinoCapture for Windows

DinoCapture is a Windows imaging software for USB Dino-Lite microscopes used in many applications, from industrial to educational to research. It allows users to preview multiple cameras, adjust the camera and LED settings, capture images and videos, add text and drawings, perform measurements, and other special functions.



DinoCapture 2.0



Upcoming DinoCapture 3.0

DinoXcope for macOS

DinoXcope is a functional software for using Dino-Lite on macOS. With features like image and video capture, editing tools, measurements, and more, DinoXcope provides users the essentials for live imaging and documentation.

SDK

The software development kit (SDK) allows the integration of Dino-Lites into the customer's own system. The package provides controlling capabilities for the camera and LEDs of Dino-Lites. SDK is compatible with Windows in 32-bit OS or 64-bit OS versions. Contact your local distributor for more information.

DinoConnect for iOS & Android

DinoConnect is an imaging app designed to be used with a Dino-Lite connected via a dedicated Wi-Fi steamer for fieldwork and outdoor applications. This app allows users to preview live images, control illumination and exposure, take photos, record videos, add texts, and perform measurements on a mobile device.



DinoConnect 2

Accessories

Wi-Fi Streamer

WF-20



Modular Wi-Fi streamer compatible with Dino-Lite AF series

WF-10



Wi-Fi streamer compatible with a wide selection of Dino-Lites

Rack

RK-10



General-purpose tabletop rack

RK-02



Gooseneck rack

MS-W1



Handy wheeled stand

RK-06 / RK-06F*



Agile tabletop rack
* Fine-focus adjustment option

RK-05 / RK-05F*

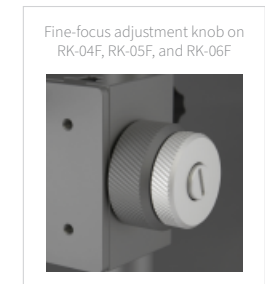


Tiltable rack
* Fine-focus adjustment option

RK-04 / RK-04F*



Compact rack
* Fine-focus adjustment option



Fine-focus adjustment knob on RK-04F, RK-05F, and RK-06F

Extension for RK-10 or RK-06



RK-10-PX2
XY positioning arm



RK-10-FX
Flexible arm extension



SS-M2
Petri dish holder

Holder

HD-M2A / HD-M2B



Metal holder with quick release screw
Vertical/horizontal mounting hole size: 10mm(A) or 1/2"(B)

Front Cap

N3C-R



Ring light cap

N3C-A



Coaxial light cap

Backlight

BL-ZW2



Backlight with adjustable and removable polarizer

BL-CDW



Backlight with bright field and dark field illumination

Others

KM-01



Knob motor for adjusting the focus knob remotely

SW-F1



Foot pedal for triggering camera operations on software (DinoCapture)

To learn more about the complete range of accessories, please contact your local distributor or visit www.dino-lite.com.