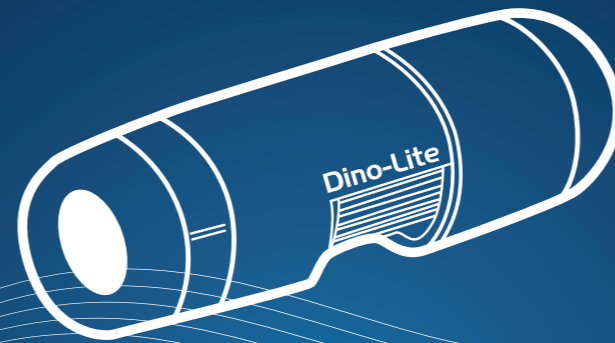


Brief Product List

Dino-Lite Digital Microscope

Product	Resolution	Magnification	Interface	Measurement & Calibration	LEDs	Polarizer	Long Working Distance	Special Features	Detachable Front Cap
Dino-Lite Basic & Premier									
AM2111	640*480	20x~50x, 200x	USB2.0		4-White				
AM3113T	640*480	20x~50x, 200x	USB2.0	V	8-White				
Dino-Lite Edge_USB									
AM4115ZT	1.3MP	20x~220x	USB2.0	V	8-White	V			V
AM4115ZTL	1.3MP	10x~140x	USB2.0	V	8-White	V	V		V
AM4115ZTW	1.3MP	10x~50x	USB2.0	V	8-White	V	V		V
AM4115ZT	1.3MP	20x~220x	USB2.0	V	8-White	V		AMR	V
AM4115ZT4	1.3MP	400x~470x	USB2.0	V	8-White	V		AMR	V
AM4115ZTL	1.3MP	10x~140x	USB2.0	V	8-White	V	V	AMR	V
AM4115T5	1.3MP	500x~550x	USB2.0	V	8-White			AMR + High Mag.	V
AM4115T8	1.3MP	700x~900x	USB2.0	V	8-White			AMR + High Mag.	V
AM4115ZT	1.3MP	20x~220x	USB2.0	V	8-White	V		EDOF+ EDR	V
AM4115ZTL	1.3MP	10x~140x	USB2.0	V	8-White	V	V	EDOF+ EDR	V
AM4115-FVT	1.3MP	20x~220x	USB2.0	V	8-400nm				V
AM4115-FUT	1.3MP	20x~220x	USB2.0	V	8-375nm				V
AM4115-FIT	1.3MP	20x~220x	USB2.0	V	8-850nm				V
AM4115-FJT	1.3MP	20x~220x	USB2.0	V	8-940nm				V
AM4115-FKT	1.3MP	20x~220x	USB2.0	V	8-740nm				V
AM4115T-FUW	1.3MP	20x~220x	USB2.0	V	375nmWhite				V
AM4115T-FVW	1.3MP	20x~220x	USB2.0	V	400nmWhite				V
AM4115T-LFVW	1.3MP	10x~140x	USB2.0	V	400nmWhite		V		V
AM4115-FJT	1.3MP	20x~220x	USB2.0	V	8-940nm			EDOF+ EDR	V
AM4115T-GFBW	1.3MP	20x~220x	USB2.0	V	Ex. 480nmWhite Em. 510nm				V
AM4115TW-GFBW	1.3MP	10x~50x	USB2.0	V	Ex. 480nmWhite Em. 510nm				V
AM4115T-YFGW	1.3MP	20x~220x	USB2.0	V	Ex. 525nmWhite Em. 570nm				V
AM4115T-RFYW	1.3MP	20x~220x	USB2.0	V	Ex. 575nmWhite Em. 610nm				V
AM4115T-CFVW	1.3MP	20x~220x	USB2.0	V	Ex. 400nmWhite Em. 430nm				V
AM4115TW-CFVW	1.3MP	10x~50x	USB2.0	V	Ex. 400nmWhite Em. 430nm				V
AM4115T-GRFBY	1.3MP	20x~220x	USB2.0	V	Ex. 480nm/575nm Em. 510nm/610nm				V
AM4115T-DRFW	1.3MP	20x~220x	USB2.0	V	Ex. 620nmWhite Em. 650nm				V
AM7115M2T	5MP	20x~220x	USB2.0	V	8-White	V		FLC	V
AM7115M2TL	5MP	10x~140x	USB2.0	V	8-White	V	V	FLC	V
AM7115M2T	5MP	20x~220x	USB2.0	V	8-White	V		AMR + FLC	V
AM7115M2TL	5MP	10x~140x	USB2.0	V	8-White	V	V	AMR + FLC	V
AM7115MT5	5MP	500x~550x	USB2.0	V	8-White			AMR + FLC + High Mag.	V
AM7115MT8	5MP	700x~900x	USB2.0	V	8-White			AMR + FLC + High Mag.	V
AM7115M2T	5MP	20x~220x	USB2.0	V	8-White	V		FLC + EDOF+ EDR	V
AM7115M2TL	5MP	10x~140x	USB2.0	V	8-White	V	V	FLC + EDOF+ EDR	V
AM7115M2T	5MP	20x~220x	USB2.0	V	8-White	V		FLC + AMR + EDOF+ EDR	V
AM7115M2TL	5MP	10x~140x	USB2.0	V	8-White	V	V	FLC + AMR + EDOF+ EDR	V
Dino-Lite Edge_TV									
AM5212T	960H(960*480)	20x~220x	TV (NTSC/PAL)		8-White				V
AM5212ZT	960H(960*480)	20x~220x	TV (NTSC/PAL)		8-White	V			V
AM5212ZTL	960H(960*480)	10x~140x	TV (NTSC/PAL)		8-White	V	V		V
AM5212TL	960H(960*480)	10x~140x	TV (NTSC/PAL)		8-White		V		V
Dino-Lite Edge_VGA									
AM5216T	1024*768	20x~220x	VGA (D-Sub)		8-White				V
AM5216ZT	1024*768	20x~220x	VGA (D-Sub)		8-White	V			V
AM5216ZTL	1024*768	10x~140x	VGA (D-Sub)		8-White	V	V		V
AM5216TL	1024*768	10x~140x	VGA (D-Sub)		8-White		V		V
Dino-Lite Premier_DVI									
AM5018MT	HD 720P	20x~220x	DVI		8-White				V
AM5018M2T	HD 720P	20x~220x	DVI		8-White	V			V
AM5018M2TL	HD 720P	20x~90x	DVI		8-White	V	V		V
AM5018MTL	HD 720P	20x~90x	DVI		8-White		V		V



Redefine the microscope

Dino-Eye Eyepiece Camera

Product	Interface	Resolution	Aperature Diameter	Product	Interface	Resolution	Aperature Diameter
AM4022X	TV	640*480	23/30/30.5mm	AM4025X	USB2.0	1280*1024	23/30/30.5mm
AM4023X	USB2.0	1280*1024	23/30/30.5mm	AM7023	USB2.0	2592*1944	23mm
AM4023U	USB2.0	1280*1024	Fits over any eyepiece (up to 38mm)	AM7023B	USB2.0	2592*1944	30/30.5mm
AM4023CT	USB2.0	1280*1024	C-Mount	AM7023CT	USB2.0	2592*1944	C-Mount

Accessories List

Product	Description	Product	Description	Product	Description
WF-10	Dino-Lite WiFi Streamer (connection with iPhone, iPad or Android mobile devices)	RK-02	Gooseneck rack	BL-ZW1	Backlight pad with rotatable polarizer
RK-10	Stable and precise tabletop stand with quick release	MS-W1	Wheel rack (for inspection of flat and cylindrical surfaces)	KM-01	Knob motor
RK-10-EX	Additional horizontal arm (For RK-10)	MS-15X-S1	Miniature XY+R inspection stage	SL-ZW1	Side light with polarizer
RK-10-FX	Flexible arm extension (For RK-10)	MS-25X	Inspection XY turntable	SW-F1	Foot pedal
RK-10-VX	Vertical arm extension (For RK-10)	BL-CDW	Transmitted-light illuminator	N3C-R	Ring light Cap (For Dino-Lite Edge series)

Dino-Lite Edge / 5MP

The Dino-Lite Edge 5MP series, including AM7115, AM7515, and AM7815, were designed to meet the needs of higher image resolution, superior image quality and greater flexibility in use. The 5MP Edge series retains all the features and options available in the 1.3MP Edge series, but added with Flexible LED Control (FLC) feature and new generation metal-housing design. Thanks to low-loss compression, the 5MP Edge series is able to deliver crisp image quality at moderate frame rate over USB2.0.

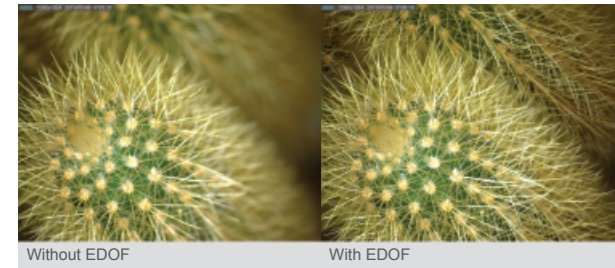


Advanced Features

Flexible LED Control (FLC)
With 4-quadrants switching capability and 6-levels luminance adjustability, the FLC provides greater controllability over the built-in LEDs.



Extended Depth of Field (EDOF)
Within a few clicks, the EDOF increases the depth of field by stacking a series pictures with different focus into one image with one click.



Interchangeable Front-Cap Design
The detachable and interchangeable front-cap design provides better adaptability to more applications.

Note: The advanced features are available with DinoCapture 2.0 running on Windows OS.

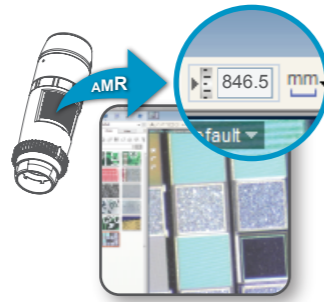
Dino-Lite Edge / TV

With 960H technology and the advanced Edge-series optics, the AM5212 series delivers unmatched image quality via composite video signal.

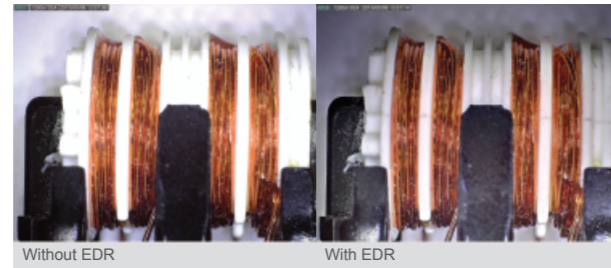


AM5212ZT / TV (NTSC/PAL), [20x~220x]

Automatic Magnification Reading (AMR)
Enabling the software to read the magnification from the device automatically, the AMR unburdens the measurement tasks and improves the accuracy of measurement.



Extended Dynamic Range (EDR)
Ideal for object with large variation in brightness, the EDR largely increases the dynamic range by stacking pictures taken at different exposure with one click.



Product	FLC	AMR	EDOF / EDR
AM7115 Series	√		
AM7515 Series	√	√	
AM7815 Series	√		√
AM7915 Series	√	√	√

Dino-Lite Edge / D-sub

With the simplicity of connecting to a LCD monitor directly, the Dino-Lite Edge AM5216 series is most suited for application where PC is unwanted but image quality is demanded. The new generation of AM5216 delivers stunning image sharpness through a 1280x720 resolution.



AM5216ZT / D-Sub, XGA, [20x~220x]

Dino-Lite Connect

The WF-10 Dino-Lite CONNECT is a Wi-Fi streamer designed for displaying Dino-Lite's live image on a mobile device such as iPhone, iPad, Android phone, or Android tablet. By connecting the Dino-Lite to the USB port, the WF-10 could transmit high quality live images smoothly through Wi-Fi to the connected mobile devices. The WF-10 can be powered by the power adapter for stationary use and the battery will be charged simultaneously for the next mission.

Note: The WF-10 is compatible with certain models of Dino-Lite. Please consult your local reseller for further information.



Features

Live on Mobile Devices
Wirelessly stream live image of Dino-Lite digital microscopes to your iOS or Android mobile devices with quality retained image.

Images Capture and Videos Record
Capture and view images or recorded videos on the mobile devices.

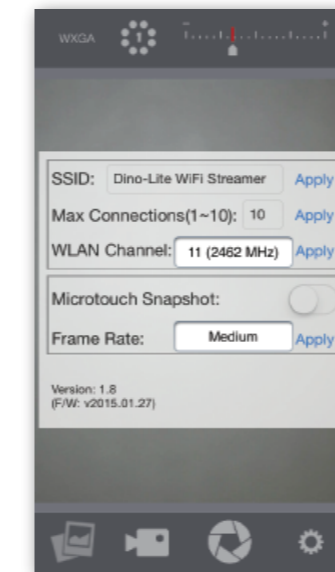
Camera Settings
Control Dino-Lite from the mobile devices for better picturing. The controllable items are LED, exposure, resolution, and MicroTouch.

Multi-Users
Support connecting to multiple mobile devices. The changeable SSID allows existence of different working group without interfere each other.

Stationary Use
Connect to the power adapter for stationary configuration, and the battery will be charged simultaneously.

Boost Mobility
With the light weighted, small form factor, and exchangeable battery design, the WF-10 is ideal to be used in the field together with mobile devices.

Compatibility
Compatible to most Dino-Lite Edge and Premier (R4) series with USB version. Please contact local dealer before purchasing.



New Accessories

RK-10

The Dino-Lite RK-10 universal stand is a sturdy tabletop platform that features precise fine-focus adjustment and quick release function. The quick release button is ideal for moving the Dino-Lite to the desired vertical position promptly at ease. The fine-focus adjustment knob provides a more sturdy operation of focus adjustment without changing the magnification or focus of Dino-Lite. The arm for holding the Dino-Lite can be replaced or extended with various arm extension for maximizing the flexibility of use.



More extension for the RK-10



RK-10-EX / additional horizontal arm



RK-10-FX / flexible arm extension



RK-10-VX / vertical arm extension

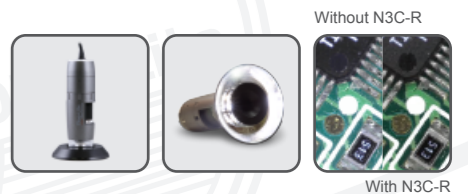
RK-02

The RK-02 is a durable gooseneck rack designed for flexible and ergonomic usage for Dino-Lite. The C-clamp of RK-02 fits to most desk surface or pole up to 3-inch in thickness, horizontally or vertically.



N3C-R

The N3C-R front cap is a unique and the simplest solution designed to provide ring illumination for a microscope. It fully utilizes the Dino-Lite's built-in LEDs by redirecting it to form a focused, diffused, and uniform ring-light.



BL-CDW

By easily configuring with Dino-Lite, the BL-CDW transmitted-light illuminator provides alternative ways to enhance the contrast of specimen with bright field and dark field modes.

